



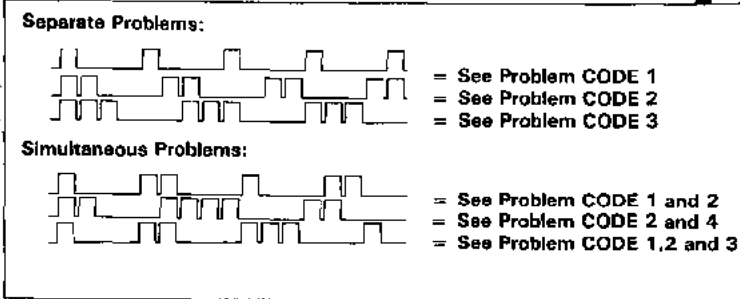
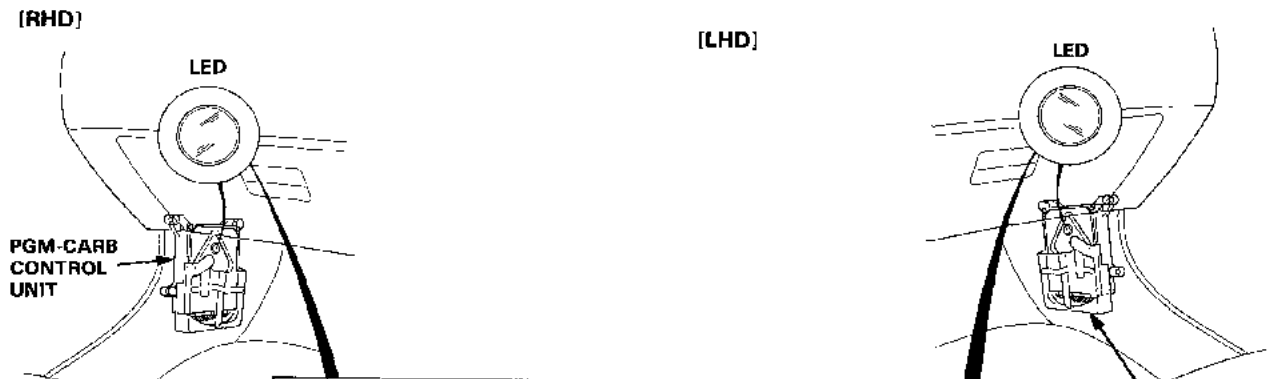
Troubleshooting

Self-Diagnostic Procedure

[D13B2 EUROPE & KQ and D15B4 (KQ CARB) Engine]

Turn the ignition on, remove the door sill molding and pull the carpet back to expose the control unit, and observe the LED on the control unit. The LED indicates a system failure code by its blinking frequency.

The control unit LED can indicate any number of simultaneous component problems by blinking separate codes, one after another.



SELF-DIAGNOSIS INDICATOR BLINKS	SYSTEM INDICATED	PAGE
1	OXYGEN CONTENT	11-30
2	VEHICLE SPEED PULSER	11-32
3	MANIFOLD ABSOLUTE PRESSURE	11-34
4	VACUUM SWITCH SIGNAL	11-38
5	MANIFOLD ABSOLUTE PRESSURE	11-36
6	COOLANT TEMPERATURE	11-40
8	IGNITION COIL SIGNAL	11-42
9	ELECTRIC LOAD DETECTOR (ELD)*	11-44
10	INTAKE AIR TEMPERATURE**	11-46
11	A/T LOCK-UP CONTROL SOLENOID VALVE A/B*	11-48
14	ELECTRONIC AIR CONTROL	11-160

*: D15B4 (KQ CARB) Engine
 **: D13B2 EUROPE & KQ

If CODE 7, 12, 13 (or more than 14), count the number of blinks again; if the indicator is in fact blinking these codes, substitute a known-good control unit and recheck. If the indication goes away, replace the original control unit. The control unit LED may come on, indicating a system problem, when, in fact, there is a poor or intermittent electrical connection. First, check the electrical connections, clean or repair connections if necessary.

(cont'd)